

An aerial, high-angle photograph of a city street, likely in New York City, showing a circular road with multiple lanes. The road is filled with traffic, including several yellow taxis and a silver sedan. The surrounding buildings are tall and modern, with a curved facade. The image is rotated 90 degrees clockwise.

# **THE 22nd ICTPA ANNUAL CONFERENCE**

**moving transportation forward  
during challenging economic times**

**Conference Program**

**May 22-24, 2009 . New Jersey**



# Table of Content

About ICTPA.....	3
Welcoming Messages	
President of ICTPA.....	5
Conference Committee.....	6
Conference At A Glance.....	7
Conference Program on May 23, 2009.....	9
Technical Session: 1A	
<b>Impact of Economic Crisis to Transport Operations and Management</b> .....	10
Technical Session: 1B	
<b>Efficient Urban and Regional Transport</b> .....	10
Technical Session: 2A	
<b>Sustainable Multimodal Transport Networks and Infrastructure (I)</b> .....	12
Technical Session: 2B	
<b>Sustainable Multimodal Transport Networks and Infrastructure (II)</b> .....	12
Conference Program on May 24, 2009.....	15
Technical Session: 3A	
<b>Efficient Urban and Regional Transport</b> .....	16
Technical Session: 3B	
<b>Sustainable Multimodal Transport Networks and Infrastructure (III)</b> .....	16
Technical Session: 4A	
<b>Integrated Land Use and Transportation Planning</b> .....	18
The 23 <sup>rd</sup> ICTPA Annual Meeting (2010): Call for Papers.....	19

Acknowledgement





# ABOUT ICTPA

## Our Mission

- To keep Members informed about multimodal transportation developments in the Northeastern US as well as nationally and internationally.
- To provide the opportunity to enhance professional relationships among our Members.
- To become a technical resource to our local communities in addressing their transportation issues and needs.

## The Association

Since the 1980's the number of Chinese transportation professionals has grown considerably in the United States and Canada. In order to promote the professional development of fellow Chinese who have an interest in transportation related work in North America, many Chinese transportation professionals felt strongly that we should organize as a group. After years of preparation and effort, the North America Chinese Transportation Professionals Association (NAICTPA) was formally founded on January 10, 1988. To promote a greater participation, the organization was renamed the International Chinese Transportation Professionals Association (ICTPA) in 1995.

## The ICTPA Chapters

In an effort to promote regional activities, ICTPA divides its memberships into four geographical regions. With over 600 members, ICTPA has 5 chapters in US: Washington DC, Southern California, Northeastern California, Texas and Northeastern area. Each chapter has its own regular meetings and activities. If you are interested in joining an individual chapter's activities, please contact their designated coordinator, or check ICTPA website [www.ictpa.org](http://www.ictpa.org).

## Who Could Join...

You do not have to be a transportation or traffic professional to become a member of any chapters of ICTPA. Any person engaged or interesting in transportation, or student enrolled in a graduated or undergraduate school of recognized standing, pursuing a course of study in transportation related field is welcomed.

## Please Join Us

We need your active participation to strengthen our organization and concurrently provide you with a unique opportunity to meet with very notable individuals in the Transportation profession. ICTPA can make a difference in your professional development. Please join us now and begin to experience the benefits of being a member.



# ABOUT ICTPA

## ICTPA Officers

### ICTPA Board of Directors (2008/07 - 2009/06)

#### *ICTPA Headquarters*

Chi-Hsin Shao, President  
Mike Houh, Vice President

#### *Washington, DC Chapter:*

Mike Houh, Chapter President  
Charles Liu

#### *US Northeast Chapter:*

Paul Eng-Wong, Chapter President  
Steven Chien

#### *Southern California Chapter:*

Zhou Min, Chapter President  
Liping Yan

#### *Northern California Chapter:*

Jason Ni, Chapter President

#### *Texas Chapter:*

Raymond Chong, Chapter President

#### *At Large:*

Virgil Ping  
Dennis Li

#### *Immediate Past President:*

Peter Lai

#### *Executive Director*

Alice Kuo

### ICTPA Past Presidents:

1987 - 1997/06	Joe Lee (李 珽)
1997/07 - 1998/06	Jerry Cheng (鄭向元)
1998/07 - 2000/06	Jimmy Lin (林錫智)
2000/07 - 2002/06	Charles Liu (劉俊嘉)
2002/07 - 2004/06	David Shen (沈龍利)
2004/07 - 2006/06	Peter Lai (黎澄天)
2006/07 - 2006/12	Luke Cheng (鄭立宏)
2007/01 - Present	Chi-Hsin Shao (邵啟興)



# WELCOMING MESSAGE

## PRESIDENT OF ICTPA

Dear Conference Participants,

It is my great pleasure to welcome you to New Jersey. This year's theme is "Moving transportation forward during challenging economic times". This is a very timely topic because we believe that transportation infrastructure investments can stimulate economic development. History has proven over and over again throughout the world that during the economic downturn period, government should invest in infrastructure improvements. Investment in infrastructure would not only generate large number of construction jobs and engineering design job opportunities during the recession, it would help sustain economic growth when the economy recovers. It is a win-win strategy for the government and the public.

Over the past 20 years, ICTPA has sponsored discussions of many critical issues relating to transportation investments and urban development. The unique feature of the ICTPA conferences is that we provide a bridge between the United States and China, Taiwan, and Hong Kong. ICTPA holds its annual conferences alternating between the US and places in China, Taiwan, and Hong Kong. So far, we have held conferences in Beijing, Nanjing, Taipei, and Hong Kong/Macau. We will continue to be the bridge between both sides of the Pacific Rim.

ICTPA has grown over the past 20 years. We now have five chapters in the United States, Northeast US based on New York, Washington DC, Northern California based in San Francisco, Southern California based in Los Angeles, and Texas based in Houston. We also have hundreds of members and friends in China, Taiwan, Hong Kong, Macau, and Singapore. Our goals are to: 1) foster opportunities for information and technological exchange among transportation planners and engineers in the U.S. and the Pacific Rim; and 2) create networking opportunities for all.

I hope you enjoy this conference, including the over 90 technical presentations as well as the networking opportunities!

I look forward to meeting you all individually.



Chi-Hsin Shao  
President, ICTPA



# WELCOMING MESSAGE

## CONFERENCE COMMITTEE

Dear ICTPA Participants,

Welcome to the New Jersey Meadowlands and thank you for joining us in celebrating the 22nd ICTPA Annual Meeting and Conference here in East Rutherford, New Jersey. The theme for this conference, “Moving Transportation Forward during Challenging Economic Times”, has been divided into four tracks:

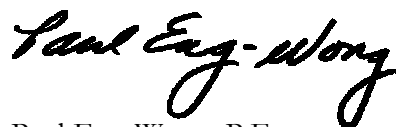
1. Integrated Land Use and Transportation Planning;
2. Efficient Urban and Regional Transport;
3. Sustainable Multimodal Transport Networks and Infrastructure; and,
4. Impact of Economic Crisis to Transport Operations and Management.

Please note that the proceedings from this conference will be available on the ICTPA website at: [www.ictpa.org](http://www.ictpa.org)

We are certainly facing some very challenging economic times and it's a testament to your commitment to safe, reliable, efficient and sustainable transportation solutions by your very presence here today. Your active participation during this conference will not only enhance your own knowledge but the sharing of ideas and experiences will benefit all present. Use this opportunity to collaborate with your peers and continue to exchange ideas afterwards.

On behalf of the Conference Organizing Committee, I'd like to take this opportunity to thank the Executive Board and Senior Advisors, and all the supporting members and friends who have worked long and hard to make this a successful event. The dedication of these individuals is truly amazing. Thanks to all the sponsors who have generously support our efforts and last but not least, thank you all that have traveled from near and far for attending this conference.

Sincerely,



Paul Eng-Wong, P.E.  
President, ICTPA-NE Chapter



# CONFERENCE AT A GLANCE

## The 22<sup>nd</sup> ICTPA Annual Meeting

Sheraton Meadowlands Hotel and Conference Center, NJ

Sheraton Plaza Drive, 2 Meadowlands Plaza, East Rutherford, NJ 07073

(201) 896-0500/(201) 896-9696

Date/Time		May 22	May 23	May 24		
		Friday	Saturday	Sunday		
Morning	9:00 a.m.	Guests Arrival Hotel Check-In	Registration		Session 3A (Diamond Court A)	Session 3B (Diamond Court B)
	10:00 a.m.		Opening Ceremony/ Plenary Session (Diamond Court D)		Session 4A (Diamond Court A)	
	11:00 a.m.					
12:00 noon	Lunch					
Afternoon	2:00 p.m.	Early Registration	Session 1A (Diamond Court A)	Session 1B (Diamond Court B)	Technical Tour: World Trade Center <sup>2</sup>	
	3:00 p.m.		Break			
	3:30 p.m.		Session 2A (Diamond Court A)	Session 2B (Diamond Court B)		
	5:00 p.m.		Break			
Evening	6:00 p.m.	A Night at the Races <sup>1</sup>	ICTPA Annual Dinner (Diamond Court C)		Dinner in Chinatown <sup>3</sup>	

<sup>1</sup>A Night at the Races

Place: Pegasus East Dinner Buffet (Meadowlands Sports Complex, East Rutherford, NJ 07073)

Courtesy transportation is arranged for pre-registered attendees in the hotel lobby at 5:30 p.m.

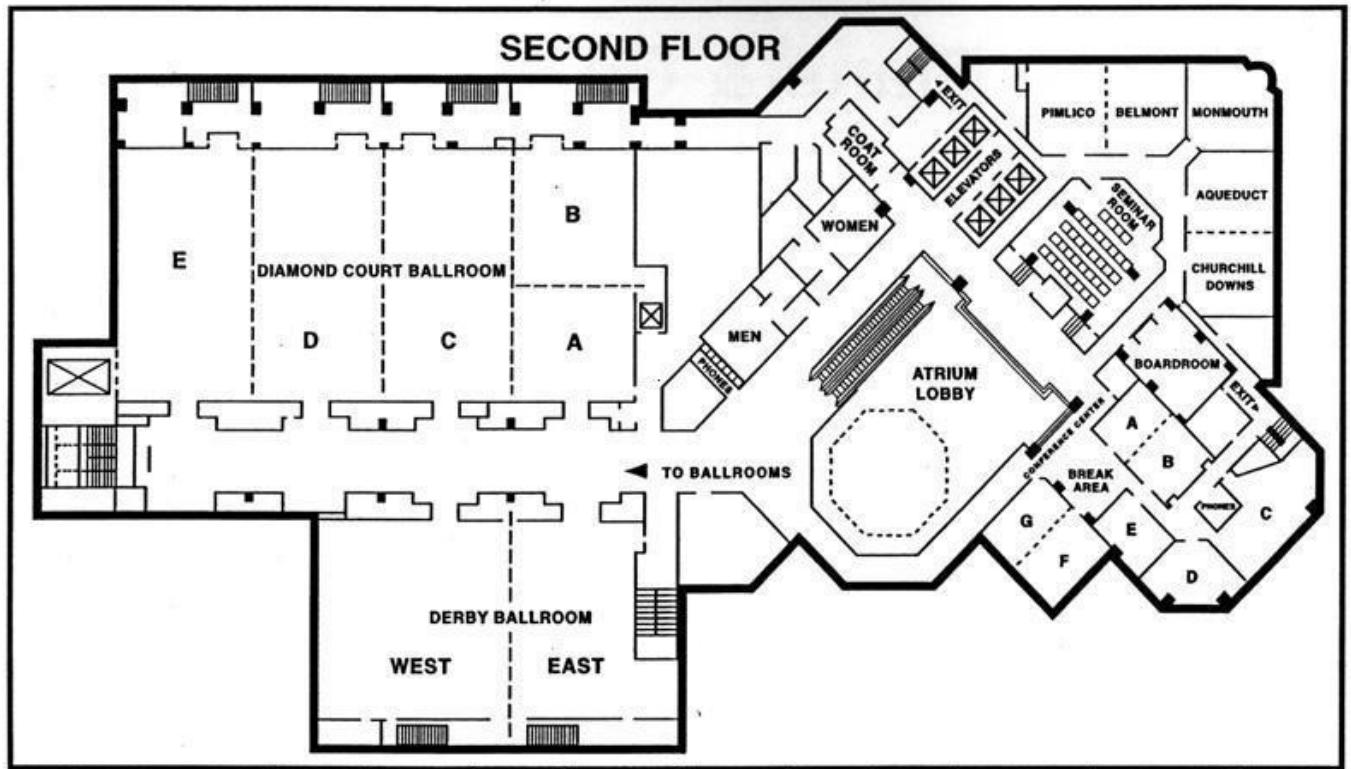
<sup>2</sup>Technical Tour (see details in the Daily Program---May24, 2009)

<sup>3</sup>Dinner in Chinatown (see details in the Daily Program---May 24, 2009)



# CONFERENCE AT A GLANCE

## Hotel Floor Plan



## Complimentary Shuttle Service

There is a complimentary train/bus station shuttle service provided by the hotel. The shuttle operates 7 days a week (8:00 a.m. to 12:00 mid night) with service to the Secaucus Junction Train Station, as well as the Secaucus Plaza Bus Stop. For detailed shuttle schedule, please see front desk for information.



# CONFERENCE PROGRAM

May 23, 2009

**9:00 a.m. - 9:30 a.m.**

**Registration**

---

**9:30 a.m. - 12:00 noon**

**Opening Ceremony/Plenary Session**

(Diamond Court D)

**Moving Transportation Forward During Challenging Economic Times**

**Moderator**

**Mr. Chi-Hsin Shao** (*President, ICTPA*)

**Guest Speakers**

**Mr. Fred Lai** (*Representative of the Acting Commissioner Stan Gee, Regional Traffic Engineer, NYSDOT, Region 11 (NYC), NY, USA*)

**Mr. Ken Voigt** (*International President, ITE, USA*)

**Dr. Wilson Chen** (*Dean and Professor, Chung-Hua University, Taiwan*)

**Dr. Ching-Lung Liao** (*Chairman, CECI Engineering Consultants, Inc., Taiwan*)

**Mr. Jimmy Lin** (*CEO, KOA Corporation, Monterey Park, CA, USA*)

---

**12:00 noon - 2:00 p.m.**

**Lunch**

(Diamond Court C)

**Keynote Speaker**

**Dr. Wilson Chen** (*Dean and Professor, Chung-Hua University, Taiwan*)

---

**2:00 p.m. – 5:00 p.m.**

**Technical Program**

(Diamond Court A/B)

Session 1A/B : 2:00 p.m. – 3:15 p.m.

Break : 3:15 p.m. – 3:30 p.m.

Session 2A/B : 3:30 p.m. – 5:00 p.m.

---

**6:00 p.m. - 8:00 p.m.**

**ICTPA Annual Dinner**

(Diamond Court C)

**Keynote Speaker**

**Mr. Ken Voigt** (*International President, ITE, USA*)

# TECHNICAL PROGRAM

## Session 1

### Session 1A

(Diamond Court A)

## Impact of Economic Crisis to Transport Operations and Management

#### Moderator

**Dr. Mike Houh**

*President, ICTPA Washington DC Chapter*

#### 1A-1

The Role of the World Bank in Financing  
Carbon Emissions Reduction Projects in  
the Transportation Sector

**Holly Krambeck**

*The World Bank, Washington DC, USA*

#### 1A-2

Sustainability of Vast Infrastructure  
Investment in China – Some Observation  
on Urban Transportation Systems

**Eric P. K. Ho**

*Gallop Corporation, Rockville, MD, USA*

#### 1A-3

Recent Trends and the Impacts of Financial  
Crisis on International Shipping

**Chang-Qian Guan**

*United States Merchant Marine Academy, NY,  
USA*

(to be continued)

### Session 1B

(Diamond Court B)

## Efficient Urban and Regional Transport

#### Moderator

**Professor Cynthia Chen**

*City College of New York*

#### 1B-1

Metro Gold Line Foothill Extension  
Construction Authority Strategic Planning  
Study, Phase 2, Ontario, California

**Jimmy Lin**

*KOA Corporation, Monterey Park, CA, USA*

#### 1B-2

Traffic Solutions Emerge: Congestion to  
No Longer Hinder Flushing's Robust  
Economic Growth

**Babu K. Veeregowda**

*Eng-Wong, Taub & Associates, NY, USA*

#### 1B-3

Evacuation Study for Union Station  
Intermodal Transportation Center in  
Washington DC

**Mike Houh**

**Lin Qiu**

**Jian-Wei Wang**

*Precision Systems, Inc., Washington DC, USA*

(to be continued)

# TECHNICAL PROGRAM

## Session 1

### Session 1A

(Diamond Court A)

## Impact of Economic Crisis to Transport Operations and Management

#### Moderator

**Dr. Mike Houh**

*President, ICTPA Washington DC Chapter*

#### 1A-4

Design and Modeling of Public Transit  
Services and Networks

**Chien-Hung Wei**

**Feng-Ming Tsai**

**Wun-jin Chen**

*National Cheng Kung University, Tainan, Taiwan*

**Steven Chien**

*New Jersey Institute of Technology, Newark, NJ,  
USA*

### Session 1B

(Diamond Court B)

## Efficient Urban and Regional Transport

#### Moderator

**Professor Cynthia Chen**

*City College of New York*

#### 1B-4

Gapanalysis©: A Better Way to Bridge the  
Gap.

**Maurice Rached**

*Maser Consulting P.A., Hamilton, NJ, USA*

# TECHNICAL PROGRAM

## Session 2

### Session 2A

(Diamond Court A)

## Sustainable Multimodal Transport Networks and Infrastructure (I)

#### Moderator

**Professor Wei Chou Virgil Ping**  
*Florida State University*

#### 2A-1

Taiwan High Speed Rail System

#### Kang Huang

*URS Corporation, Dallas, TX, USA*

#### 2A-2

Simulation-based Model for Evaluating  
Energy Consumption and Travel Time  
under Various Train Controls

#### Kitae Kim

#### Steven Chien

*New Jersey Institute of Technology, Newark, NJ,  
USA*

#### 2A-3

Utilizing Subregional travel demand model  
in small urban community transportation  
planning - A case study of Missouri City  
Traffic Model in Texas

#### Ying Chen

*Parsons Brinckerhoff, Houston, TX, USA*

#### Heng Wang

#### Chi-Ping Lam

*Houston-Galveston Area Council, TX, USA*

(to be continued)

### Session 2B

(Diamond Court B)

## Sustainable Multimodal Transport Networks and Infrastructure (II)

#### Moderator

**Professor Rachel Liu**  
*New Jersey Institute of Technology*

#### 2B-1

Context –Sensitive Design, A Good Idea:  
Then, Now, and for the Future

#### Leon Goodman

*Stevens Institute of Technology, Hoboken, NJ,  
USA*

#### 2B-2

Traffic Analysis Study on 11th Street Bridge  
Design Build Project in Washington DC

#### Mike Houh

#### Jian-Wei Wang

#### Lin Qiu

*Precision Systems, Inc., Washington DC, USA*

#### 2B-3

The Research on Improving Vehicle Type  
Discrimination Rate of Traffic Volume  
Detector

#### Shu-Fang Lai

*Takming University of Science and Technology,  
Taipei, Taiwan*

#### Darren Chen

*Light Permeation Code Co. Ltd., Taiwan*

#### Si-Hui Yang

*Graduate student, Takming University of Science  
and Technology Taipei, Taiwan*

(to be continued)

# TECHNICAL PROGRAM

## Session 2

### Session 2A

(Diamond Court A)

## Sustainable Multimodal Transport Networks and Infrastructure (I)

#### Moderator

**Professor Wei-Chou Virgil Ping**

*Florida State University*

#### 2A-4

Optimizing Fare Structure and Service  
Frequency for an Intercity Transit - A Case  
Study of Taiwan High Speed Rail

#### Feng-Ming Tsai

*National Cheng Kung University, Tainan, Taiwan*

#### Steven Chien

*New Jersey Institute of Technology, Newark, NJ,  
USA*

#### Chien-Hung Wei

*National Cheng-Kung University, Tainan,  
Taiwan*

### Session 2B

(Diamond Court B)

## Sustainable Multimodal Transport Networks and Infrastructure (II)

#### Moderator

**Professor Ron-Fang Rachel Liu**

*New Jersey Institute of Technology*

#### 2B-4

How to Maintain Continuity of Operations  
under Disastrous Conditions:  
Transportation Elements of Critical  
Infrastructure in China

#### Yi Deng

*Parsons Transportation Group, New York, NY,  
USA*

#### Ron-Fang Rachel Liu

*New Jersey Institute of Technology, Newark, NJ,  
USA*



# CONFERENCE PROGRAM

May 24, 2009

**9:00 a.m. - 12:00 noon**

## Technical Program

(Diamond Court A)

Session 3A/B : 9:00 a.m. - 10:15 a.m.

Break : 10:15 a.m. - 10:30 a.m.

Session 4A : 10:30 a.m. - 12:00 a.m.

---

**12:00 noon - 2:00 p.m.**

## Lunch

(Diamond Court C)

Industrial Prospective

23rd ICTPA Annual Conference (2010, Taiwan)

**Professor Joel Zheung-yi Shon** (*Co-organizer and Technical Committee Chair, ICTPA 2010 Annual Conference*)

Closing Remark

**Mr. Paul Eng-Wong** (*President, ICTPA Northeastern Chapter*)

---

**2:00 p.m. – 5:00 p.m.**

**Technical Tour: World Trade Center**

(The guided walking tour will meet at the hotel lobby at 2:30 p.m.)

---

**6:00 p.m. – 8:00 p.m.**

**Dinner in Chinatown**

Place: Jing Fong (金豐) Restaurant

(20 Elizabeth Street, New York, NY (212) 964-5256 / 964-5257)

# TECHNICAL PROGRAM

## Session 3

### Session 3A (Diamond Court A) Efficient Urban and Regional Transport

#### Moderator

**Ms. Min Zhou**

*President, ICTPA Southern California Chapter*

#### 3A-1

Performance Measures for Arterial  
Corridors with Traffic Signals

**Min Zhou**

*KOA Corporation, Orange, CA, USA*

#### 3A-2

Developing a Safety Prompt List for Bus  
Rapid Transit in New York City

**Matthew T. Carmody**

*Eng-Wong, Taub & Associates, NY, USA*

#### 3A-3

Capevacuation Traffic Evacuation Model -  
An Experience in Washington, DC

**Yin Liu**

*Ph.D. Candidate, University of Maryland, College  
Park, MD, USA*

**Yan-Lin Li**

*District Department of Transportation,  
Washington DC, USA*

**Mike Houh**

*Precision Systems, Inc., Washington DC, USA*

(to be continued)

### Session 3B (Diamond Court B) Sustainable Multimodal Transport Networks and Infrastructure (III)

#### Moderator

**Professor Fengbao Lin**

*City College of New York*

#### 3B-1

Geotechnical Solutions for a Bridge  
Widening Project in Highly Seismic Active  
Region of Southern California

**Endi Zhai**

*HDR Engineering, Inc., Irvine, CA, USA*

#### 3B-2

Bridge Horizontal Force Distribution and  
Substructure Point of Fixity

**Yu-Min Yang**

**Sejla Bakalovic**

*Kimley-Horn and Associates, Inc., Houston, TX,  
USA*

#### 3B-3

Evaluation of Unreinforced Masonry  
Bridge Towers for Seismic Retrofit

**Fei Zeng**

**Feng-Bao Lin**

*The City College of New York, New York, NY,  
USA*

(to be continued)

# TECHNICAL PROGRAM

## Session 3

### Session 3A

(Diamond Court A)

## Efficient Urban and Regional Transport

#### Moderator

**Ms. Min Zhou**

*President, ICTPA Southern California Chapter*

#### 3A-4

High Definition Survey (HDS) System for  
Bridge Rehabilitation Projects

**George Tung**

**Duvan Hoffmann**

*Chilton Engineering, Inc., NJ, USA*

### Session 3B

(Diamond Court B)

## Sustainable Multimodal Transport Networks and Infrastructure (III)

#### Moderator

**Professor Feng-Bao Lin**

*City College of New York*

#### 3B-4

Minimum Base Clearance for Achieving  
Sustainable Pavement Structures

**Wei-Chou Ping**

*Florida State University, Tallahassee, FL, USA*

**Bruce Dietrich**

*Florida Department of Transportation,  
Tallahassee, FL, USA*

### Session 4A

(Diamond Court A)

## Integrated Land Use and Transportation Planning

#### Moderator

**Dr. Jason Ni**

*President, ICTPA Northern California Chapter*

#### 4A-1

Motorization, Vehicle Purchase and Use Behavior  
in China: A Shanghai Survey

**Jason Ni**

*Parsons Brinckerhoff, Sacramento, CA, USA*

#### 4A-2

The Decision Support System and Integrated  
Database for Transportation Infrastructure  
Deliberations in Taiwan

**Yen-Hung Chou**

**Hui-Yu Chung**

*THI, Taipei, Taiwan*

**Kuo-Shian Lin**

**Chiung-Wen Chang**

*Taipei, Taiwan*

#### 4A-3

Developing a Disaggregated Origin/Destination  
Table by Combining Gravity Model and Regional  
Planning Model

**Xiao-Bo Liu**

*Jacobs Engineering Group, Morristown, NJ, USA*

#### 4A-4

Developing a Regional Rural Transit Zonal Analysis  
Methodology Based on Travel Market Patterns

**Patricia Weaver**

**Nicholas Pappas**

*University of Kansas, Lawrence, KS, USA*



## Call for Papers

The 23rd ICTPA Annual Meeting  
The 8<sup>th</sup> Asia Pacific Transportation Development Conference

May 24-26, 2010, Tainan, Taiwan

### Introduction

The International Chinese Transportation Professionals Association (ICTPA) is organized by transportation researchers, planners, consultants, and all other Chinese professionals in the transportation field. It has a very good tradition of holding an annual meeting for 23 consecutive years. The association also holds a conference on Asia Pacific Transportation Development every two years. These activities are broadly attended by transportation professionals throughout the world. The 2010 ICTPA annual meeting and the 8<sup>th</sup> Asia Pacific Transportation Development Conference will be hosted by Tainan University of Technology, Taiwan. Conference themes will focus on, but are not limited to, energy saving and CO2 reduction. Other transportation related issues are also welcome. Since there are already direct flights across the Taiwan Strait from mainland China, and the travel restriction has been lifted as well the 2010 conference is also inviting guests from mainland China. The old capital of Taiwan, the City of the South, welcomes you to experience the history of Tainan!!

### Theme : Low Carbon Emission Transportation System Design, Planning, and Practices

Issue 1: Land Use and Transportation Planning

Issue 2: Highly Efficient City and Regional Transportation Planning

Issue 3: Sustainable Multi-Modal Transportation Network Design

Issue 4: Low Carbon Emissions and Energy Saving in their Transportation Sector

### Abstract Submission

- The submitted abstract is for publication. Once accepted, you will need to submit a full paper in an academic format as well as a Powerpoint file for presentation. If you are not going to publish your paper, and you want to give a presentation only, the title of your paper will still be included in the agenda. You still need to submit your Powerpoint file for presentation.
- The abstract should be no more than 250 words in either English or Chinese. Abstracts can only be submitted in an electronic format, in Microsoft Word 95 or a newer version. Please specify “for publication and presentation” or “for presentation only” on the top of the abstract.

The abstract should be sent to the Program Review Chairs: :

#### Taiwan

Professor Joel Zhengyi Shon  
Tainan University of Technology  
529, Zhongzheng Road, Yongkang, Tainan, 710, Taiwan  
TEL : +886-933909285 FAX : +886-940475626  
e-mail : joelshon@ms4.hinet.net

#### Outside Taiwan Areas

Professor Yong Bai  
University of Kansas, Civil, Environmental & Architectural  
Engineering  
1530 W. 15<sup>th</sup> Street, Learned 2150, Lawrence, KS 66045, USA  
TEL : +1-785-864-2991 FAX : +1-785-864-3199  
e-mail: ybai@ku.edu

### Key Dates :

Abstract Submission Deadline	1/31/2010
Notification for Acceptance	2/28/2010
Full paper and Powerpoint file submission	3/31/2010

For any update information, please also visit ICTPA website at: [www.ictpa.org](http://www.ictpa.org)



# Acknowledgement

The ICTPA Conference Committee would like to express their heartfelt thanks to the following sponsors for their generous contributions to this meaningful event:

Parsons Brinckerhoff

Cambridge Systematic, Inc.

Eng-Wong, Taub & Associates

ICTPA Southern California Chapter

KOA Corporation

MS2

Precision Systems Inc.

Yu & Associates, Inc.



# Acknowledgement

## Conference Committee

Mr. Joe Tse (Chair)  
Mr. Kai Chen  
Mr. Jerry Cheng  
Mr. Kuo-Ann Chiao  
Dr. Steven Chien  
Ms. Yi Deng  
Mr. Paul Eng-Wong  
Ms. Holly Krambeck  
Mr. Peter Lai  
Dr. Feng-Bao Lin  
Mr. Xiao-Bo Liu  
Mr. Feng-Ming Tsai  
Mr. Leo Tsang  
Ms. Xiao-Pei Xu

## Technical Program Committee

Dr. Steven Chien (Chair)  
Dr. Cynthia Chen  
Ms. Holly Krambeck  
Dr. Feng-Bao Lin  
Dr. Rachel Liu  
Dr. Wei-Chou Virgil Ping

## Publication Committee

Mr. Leo Tsang (Editor/Design)  
Mr. Kuo-Ann Chiao  
Dr. Steven Chien

Special thanks to our local chapters for their local coordination and individuals who have assisted in this conference to make it a success.





# **PARSONS BRINCKERHOFF**

- **PROGRAM MANAGEMENT**
- **CONSTRUCTION MANAGEMENT**
- **OPERATIONS & MAINTENANCE**
- **ENGINEERING**
- **PLANNING/ENVIRONMENTAL**
- **STRATEGIC CONSULTING**



**For career opportunities in program management,  
design and construction management  
services please visit [www.pbworld.com](http://www.pbworld.com)**

Cambridge Systematics, Inc. is dedicated to ensuring that your transportation investments deliver the best possible results. We are recognized leaders in the development and implementation of innovative policy and planning solutions, objective analysis, and technology applications.

- Policy & Strategic Planning
- Corridor & Systems Planning
- Tolling & Road Pricing
- Freight Systems & Intermodal Planning
- Economic & Financial Analysis
- Travel Demand Forecasting & Market Research
- Asset Management
- GIS & Data Management



Corporate Headquarters  
Cambridge, MA  
617 354 0167

New York Office  
33 East 33<sup>rd</sup> Street, Suite 804  
New York, NY 10016  
212 209 6640, F: 212 209 6641

## Eng-Wong, Taub & Associates

*Traffic and Transportation Consultants*



- Traffic Engineering and Planning
- Traffic Operations and ITS
- Traffic Impact Analyses
- Traffic Simulation and Modeling
- Traffic Signal Timing
- Site Access and Circulation
- Crash Analysis and Mitigation
- Highway Corridor Studies
- Freight Movement Planning
- Public and Stakeholder Outreach
- Transportation Research and Surveys

- Transportation Planning
- Bus and Rail Transit Studies
- Bus Rapid Transit Planning
- Grade Crossing Analyses
- Parking Capacity Studies
- Parking Access Plans
- Traffic Calming and Streetscapes
- Bicycle Mobility and Bikeways
- Pedestrian Capacity Analyses
- Pedestrian and Bicycle Safety
- Travel Surveys



MBE Certified  
[www.eng-wongtaub.com](http://www.eng-wongtaub.com)  
New York • New Jersey

**ICTPA SOUTHERN CALIFORNIA CHAPTER  
MEMBERS AND FRIENDS**

**SINCERELY WISH A SUCCESSFUL**

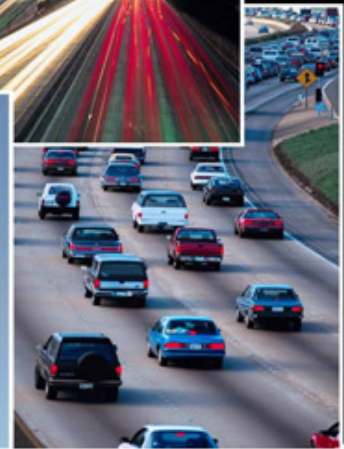
**22TH ICTPA ANNUAL MEETING**

**IN NEW JERSEY**

**MAY 2009**



***Planning and Designing  
Our Infrastructure to  
Move People and Goods  
Efficiently and Safely***



**Located in Major Cities in California, USA**

**Oakland \* Los Angeles \* Monterey Park \* Ontario \* Orange \* San Diego**

**[www.koacorporation.com](http://www.koacorporation.com)**

WHAT PEOPLE ARE SAYING ABOUT THIS AMAZING WEB-BASED

## TRAFFIC COUNT DATABASE SYSTEM

"This system is nothing short of *revolutionary*."

Dave Dysard, Vice President - Transportation  
Toledo Metropolitan Area Council of Governments, OH

"The TCDS is interactive and allows planners and average users to create reports, maps and do analysis online. When I did the demo online I was amazed at what the TCDS software has to offer."

Robert E. Smith Jr., Transportation Planner  
City of Montgomery, AL / Metropolitan Planning Organization

"It saves time on data input, which frees up personnel to do other tasks. The ability to post information on our website is a great benefit, and has considerably reduced time spent responding to requests."

Mike Goryl, Traffic Engineer  
Livingston County Road Commission, MI

SEE WHY PEOPLE ARE TALKING ABOUT THIS AMAZING SYSTEM AT:

[www.TrafficCountData.com](http://www.TrafficCountData.com)



**MS<sup>2</sup>** MIDWESTERN  
SOFTWARE  
SOLUTIONS

COMPLEX DATA / SIMPLE MANAGEMENT

---

## Precision Systems, Inc.

### Engineers, Planners and Architects

---

- *Traffic Engineering Study & Analysis*
- *Traffic Control System*
- *ITS System Design and Planning*
- *Traffic Signal Design & Operation*
- *Electrical and Streetlighting Design*
- *Roadway Design*
- *Civil Engineering*
- *Drainage Studies*



4301 Connecticut Avenue, N.W., Suite 106

Washington, DC 20008

Tel: 202-686-8225

Fax: 202-686-8227



# YU & Associates, Inc.

An Awarding Winning, Quality and Responsive Firm

Certified by NY & NJ

MBE/DBE/SBE Specializing in:

Geotechnical • Environmental • Site/Civil Engineering • Construction Services



East Site Access  
Manhattan and Queens, NY



Portal Bridge Capacity Enhancement  
Hudson County, NJ



Continental Airlines Terminal C  
Parking Garage  
Newark, NJ



Interstate 295 and Route 38 Improvement  
Burlington County, NJ



Hudson-Bergen Light Rail Transit System  
Hudson and Bergen Counties, NJ

200 Riverfront Boulevard • Second Floor • Elmwood Park, NJ 07407 • (201) 791 - 0075 • Fax: (201) 791 - 4533  
[www.yu-associates.com](http://www.yu-associates.com)

